

# Microscope Certification

Name: \_\_\_\_\_

Cell Theory Quiz: \_\_\_\_\_

Microscope Diagram: \_\_\_\_\_

Microscope Parts Practical: \_\_\_\_\_

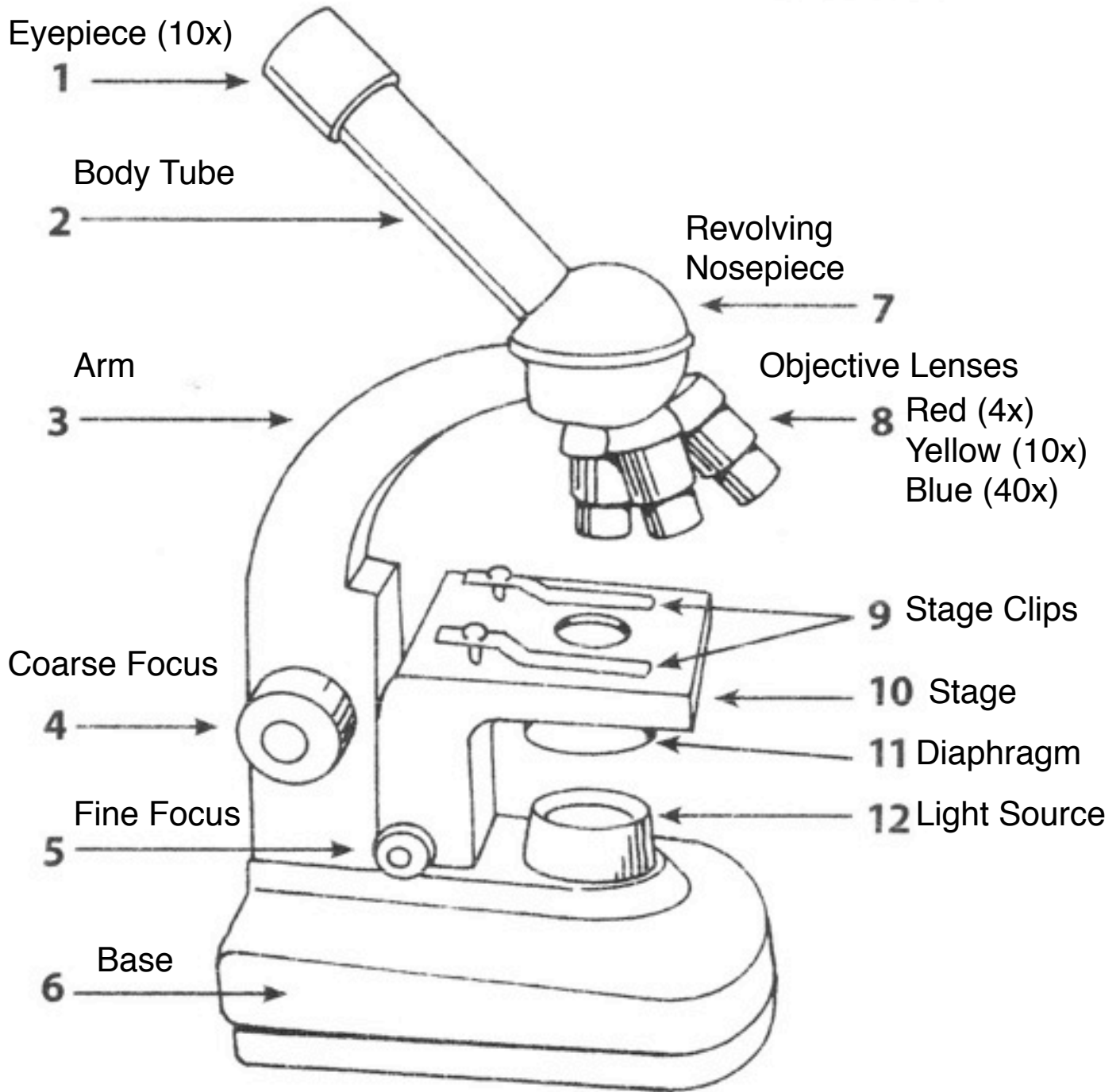
Microscope Directions Quiz: \_\_\_\_\_

Wet-Mount Slide Preparation: \_\_\_\_\_

Slide Focusing: \_\_\_\_\_

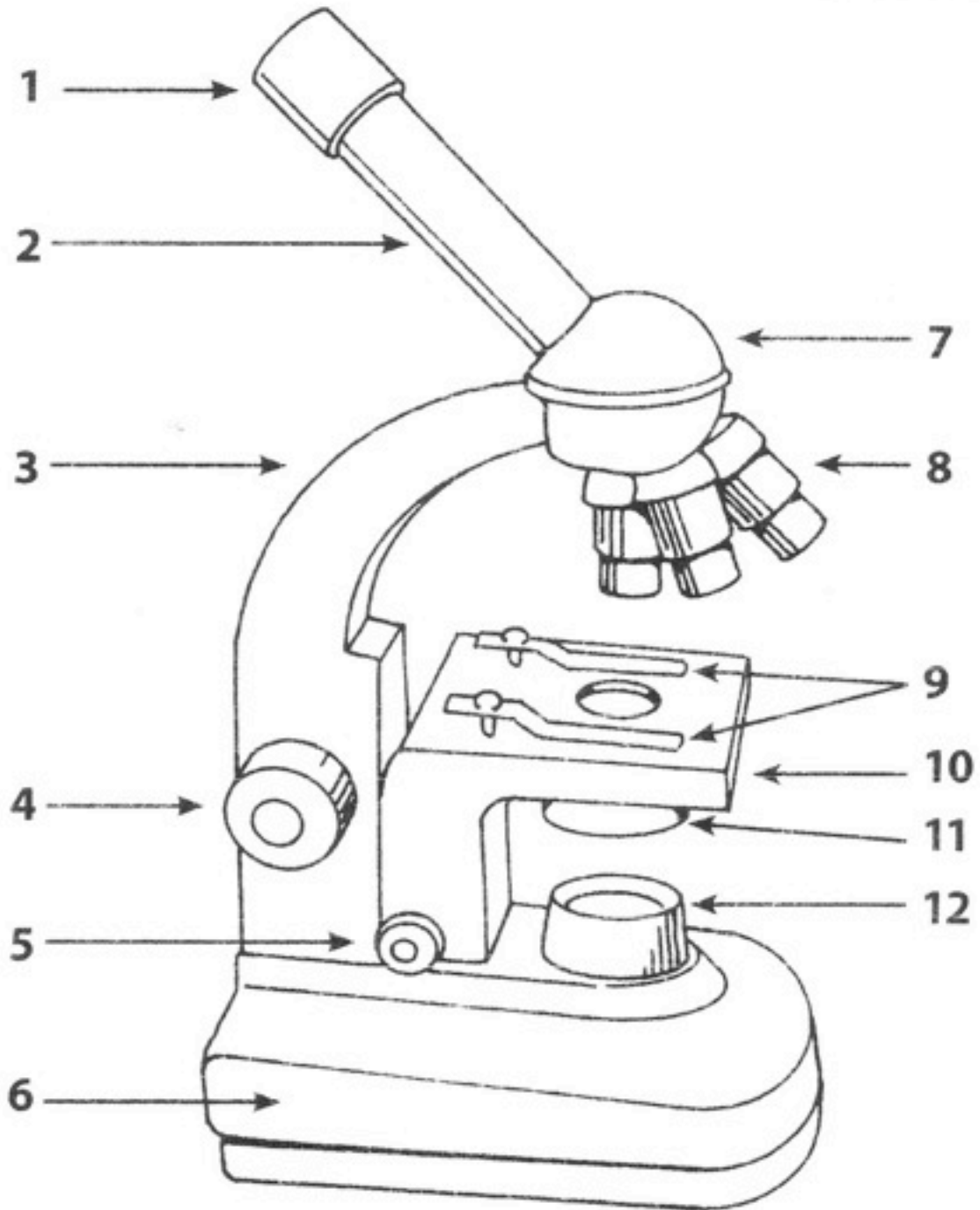
Certification Complete: \_\_\_\_\_

# Microscope Diagram:



# Microscope Diagram

Label the Following Diagram:

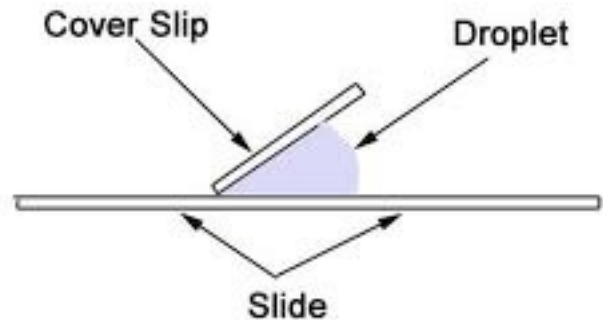


## Wet-Mount Slide Preparation

- Most samples we will observe will use wet-mount slides. These are slides that use water and a coverslip to hold the specimen in place

### To Prepare a Wet-Mount Slide:

- 1) Make sure your slide is clean and dry
- 2) Use a pipette to place 3 drops of water on the slide
- 3) Place the specimen in the water
- 4) Hold the coverslip at an angle
- 5) Touch the coverslip to a dry part of the slide
- 6) Move the coverslip towards the water drop
- 7) Carefully lower the coverslip over the water drops



## Microscope Use

- Microscopes are one of the most useful tools we use in Life Science. These directions will help you learn to successfully use a microscope.

### Microscope Handling

- 1) Always carry your scope with two hands with one on the base and one on the arm.
- 2) Keep your scope away from the table edge
- 3) Do NOT stretch power cords across aisles where people will be walking

### Microscope Use

- 4) Plug in your microscope
- 5) Make sure the stage is in the lowest position by turning the coarse focus knob
- 6) Make sure that the RED objective is in place (40x)

- 7) Turn on the lamp, you should see light shining through the stage
- 8) Place your slide on the stage
- 9) Move your slide until the specimen is **CENTERED** on the light coming through the stage
- 10) Move the stageclips to secure the slide
- 11) Use the coarse focus knob to raise the stage to its highest setting
- 12) Look through the eyepiece and observe your specimen
- 13) Use the fine focus knob to bring the image into focus
- 14) Draw a sketch of what you see
- 15) Rotate the nosepiece to the **YELLOW** objective (100x)
- 16) Look through the eyepiece and observe your specimen
- 17) Use the fine focus knob to bring the image into focus
- 18) Draw a sketch of what you see
- 19) Rotate the nosepiece to the **BLUE** objective (400x)
- 20) **DO NOT TOUCH THE COARSE FOCUS KNOB WHEN USING THE BLUE OBJECTIVE!!!!!!!!!!**
- 21) Look through the eyepiece and observe your specimen
- 22) Use the fine focus knob to bring the image into focus
- 23) Draw a sketch of what you see
- 24) Rotate the nosepiece to the **RED** objective
- 25) Move the stage to its lowest setting
- 26) Remove your slide from the stage
- 27) Clean the stage
- 28) Turn off the light and return your slide